

HL-G3 Series Three-Way Motorized Valves

General

HL-G3 series three-way motorized valves are used to control the cool/heat water flowing through or by pass the fan coil unit. When a thermostat sends the controlling signal to the motorized Valve, the valve is turned on to let water flow from C to B (Fig. 1), and when the signal disappears, the valve, with the help of its own spring, returns back to its original position to change the water flow from C to A(Fig. 2).

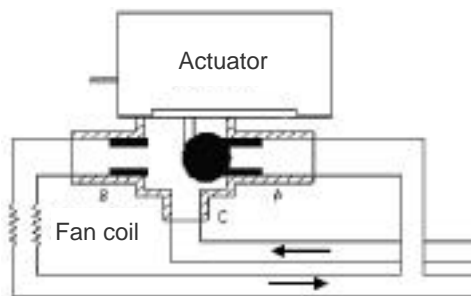


Fig.1

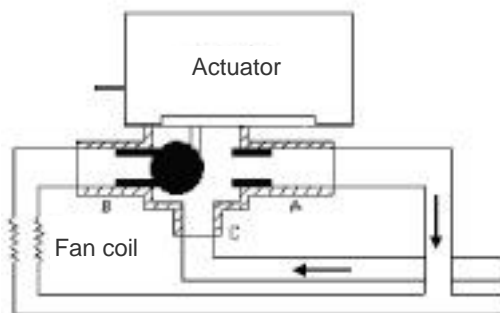
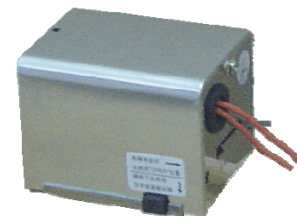
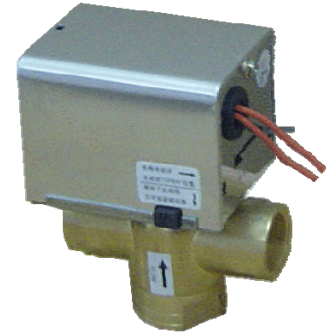


Fig.2



Features

- Forging Brass Body
- Stainless Base with Aluminum Shell
- Synchromotor Drive
- Efficient Power Consumption and Less Noise
- Separated Motorized Valve is easy to dismantle and install and convenient to use.

Model Listing

No.	Model	Caliber	Body Structure	Kv (Cv) Value	Closing Pressure (MPa)
1	HL-G3-1/2	1/2" (15mm)	Actuator and valve body fixed together	2.2 (2.5)	0.20
2	HL-G3-3/4	3/4" (20mm)		3.0 (3.5)	0.18
3	HL-G3-1	1" (25mm)		6.9 (8.0)	0.15
4	HL-G3-1/2-S2	1/2" (15mm)	Actuator is easily dismantled from valve body	2.2 (2.5)	0.20
5	HL-G3-3/4-S2	3/4" (20mm)		3.0 (3.5)	0.18
6	HL-G3-1-S2	1" (25mm)		6.9 (8.0)	0.15

Specifications

Power Supply : AC220V ± 10%, 50/60Hz

Power Consumption: <7W

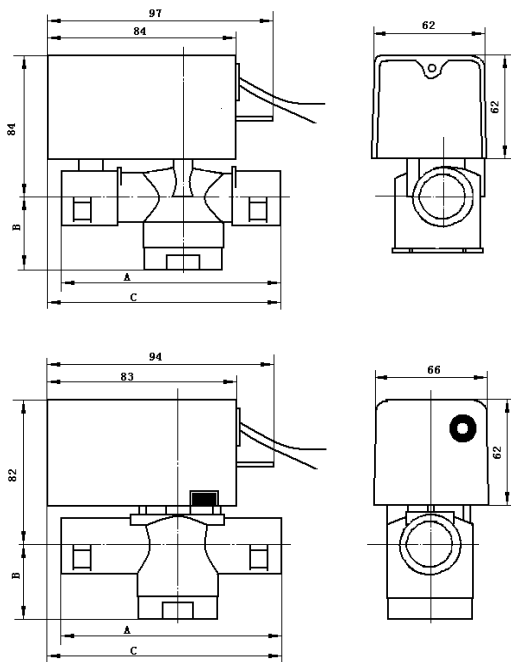
Pressure: 1.6MPa

Medium Temperature: 5~90°C

Valve Action Time: Open < 10s, Return < 6s

Working Environment: 5~60°C, 10%-95%RH

Dimension (mm)



Model	A	B	C
HL-G3-1/2	90	33	94
HL-G3-3/4	94	37	103
HL-G3-1	96	43	105
HL-G3-1/2-S2	70	33	86
HL-G3-3/4-S2	87	37	93
HL-G3-1-S2	94	43	95

Installation

