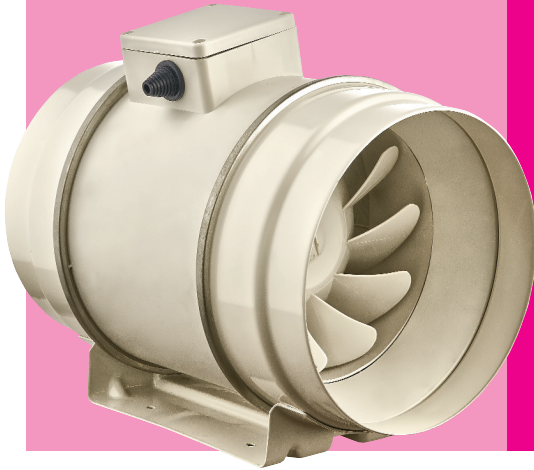


DUCT FANS

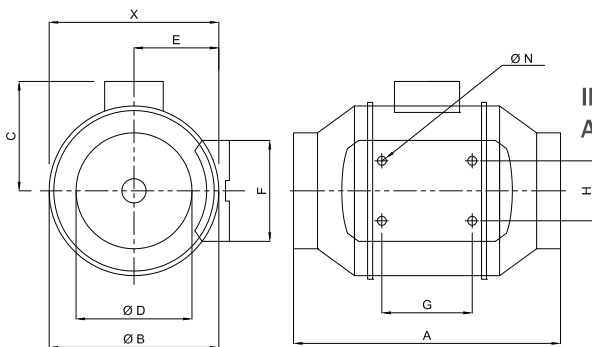


BMFX

IN LINE DUCT FANS Mixed Flow

The low profile of the range makes them the most effective solution for installations where space is restricted. Mixed flow duct fans are able to supply high air volume with low sound levels. The unique design of the support bracket allows the central cartridge, holding the motor and impeller assembly, to be fitted or removed without dismantling the ductwork.

Technical Drawings



MATERIAL

: Range of in-line mix flow duct fans are made of polypropylene plastic, one-time disposable molded, with high anti-acid function (from BMFX 100 to BMFX 200 models) or with metal casing steel finished with electrostatic powder paint (from BMFX 250 to BMFX 315 models).

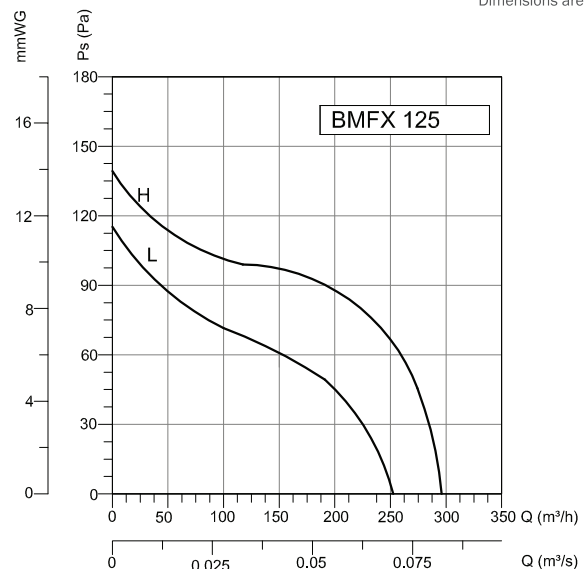
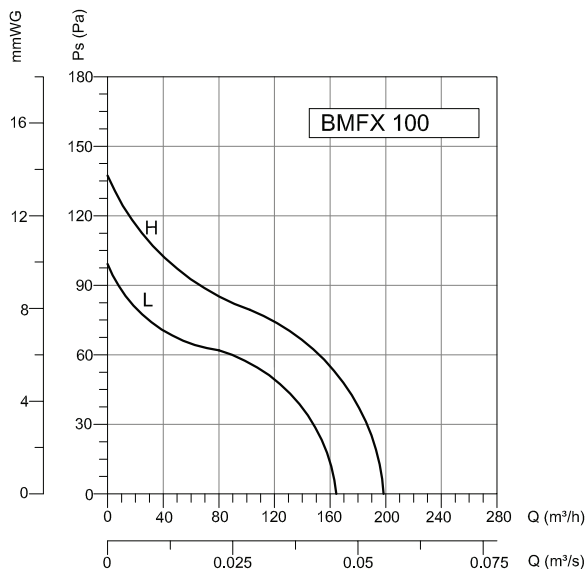
: IP44 Protection Class

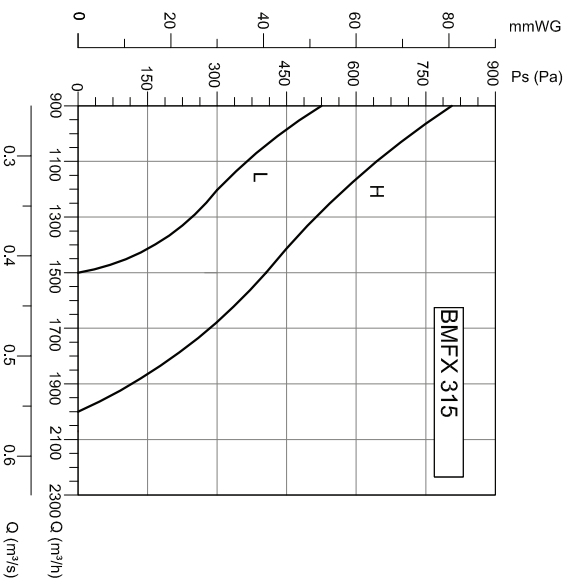
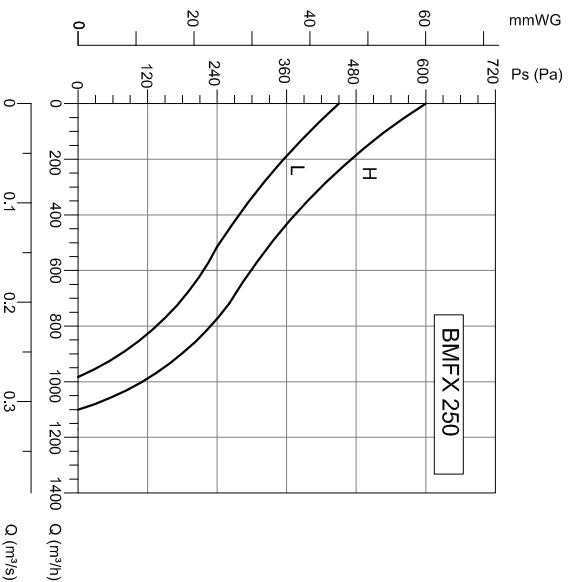
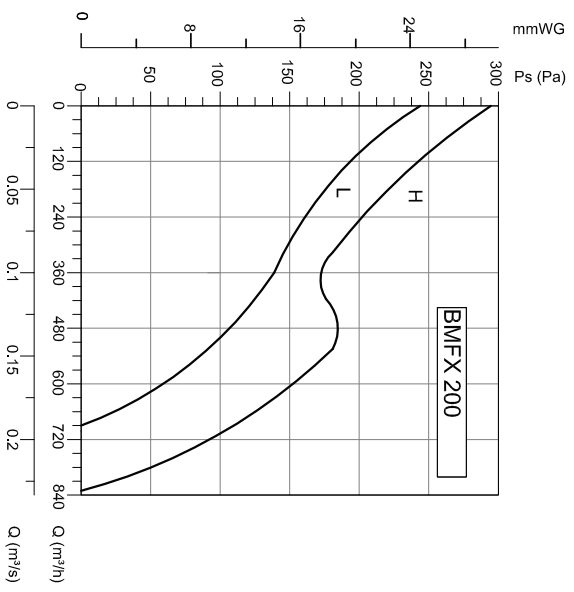
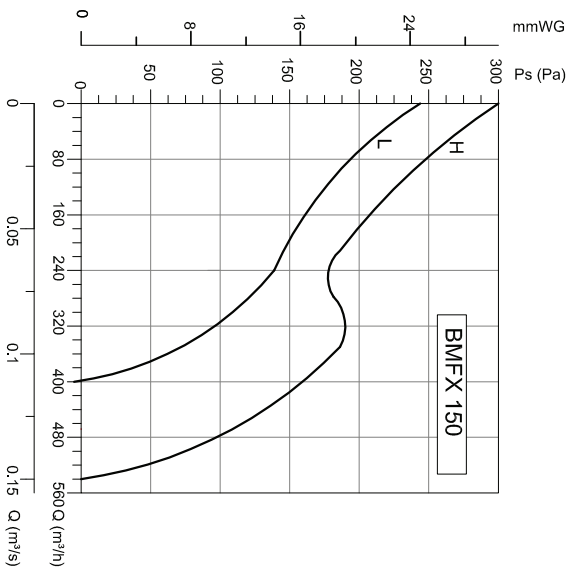
: Practical examples of installation of the BMFX mix flow fans range. The BMFX fans provide a large number of solutions for small and large ventilations. Residential-Kitchen, Domestic-Range Hood Exhaust, Commercial-Office, Industrial-Republic Restroom, School-Dining Hall, Industrial-Locker Room Health-Waiting Room, Meeting Room, Catering, Gym, Bathroom, Study Room.

INSULATION CLASS APPLICATION AREAS

TYPE	X	A	B	C	D	E	F	G	H	N
BMFX 100	188	303	176	115	97	100	90	80	60	5,5
BMFX 125	188	258	176	115	123	100	90	80	60	5,5
BMFX 150	212	320	200	127	147	112	130	80	60	5,5
BMFX 200	232,5	302	217	141	197	124	140	100	94	5,5
BMFX 250	291	386	272	192	248	155	168	145	140	7X4
BMFX 315	356	450	336	224	312	188	210	182	178	7X4

Dimensions are in (mm)





TYPE	VOLTAGE		FREQUENCY		POWER W	CURRENT (A)		CAPACITOR (µF)	SPEED d/d	AIR FLOW m³/h	SOUND PRESSURE LEVEL dB(A)	WEIGHT kg
	V	Hz	A	Hz								
BMFX 100	230	50	0,12	50	26	0,11	1	2200	198	31	2	
					23	0,11		1850	165	26		
BMFX 125	230	50	0,14	50	33	0,13	1	2250	284	31	1,8	
					28	0,13		1850	248	26		
BMFX 150	230	50	0,24	50	54	0,21	1,5	2550	530	33	2,7	
					48	0,21		1850	410	29		
BMFX 200	230	50	0,57	50	125	0,52	3	2450	840	63	4,9	
					123	0,52		1950	690	55		
BMFX 250	230	50	0,5	50	170	0,45	8	2750	1100	60	9,4	
					125	0,45		2400	990	58		
BMFX 315	230	50	0,9	50	200	0,64	10	2680	2000	70	14	
					140	0,64		2150	1500	65		